

2007-2008 | Olympic College Annual Report

A Tribute to...

Our Communities,
Our Students,
Our Employees



I AM OC...

A Tribute to Our Communities, Students and Employees

Every year, I open with a short introduction to the annual report about the achievements and successes of Olympic College the previous year. This report is no different, but we approach a challenging time as this publication goes to print.

In 2007-2008, our successes and accomplishments continued to move the institution forward to help prepare students for the 21st Century. We completed construction of one building and started another to update the college with more modern facilities and classrooms. We started new programs that catered to the needs of local employers and to the military. We also received a \$2 million donation from the Bremer Trust (scheduled to be matched by \$2 million from the state) to create a new child development center for students that need an affordable and safe environment for their children while they pursue their higher education goals.

While this past year created many new opportunities for the college, the current recession will present many challenges. It's still too early to tell all of the impacts. Yet, what we do know is the college will adapt as it has for the past 60 years and continue to make its primary focus to provide quality education to those we serve in our communities.

This year's annual report is a special one: It is a tribute to the dedication and commitment of staff, faculty, donors, elected officials and community members to the college. I am proud to present the theme for the 2007-2008 annual report, *I AM OC*.

On the cover, you'll notice a picture of a person wearing an I AM OC badge. The theme is representative of each individual that works with, engages, influences, impacts, and drives the college. While most see the college collectively, the college is a sum of the work of many individuals – some out in front, others behind the scenes – but each one a contributor to bringing quality education to the region. This issue is dedicated to the individuals that make Olympic College a premier institution and push it forward.

I hope you enjoy the 2007-2008 annual report and I look forward to hearing your feedback.

Sincerely,



Dr. David Mitchell,
President, Olympic College

P.S. - Check out I AM OC faculty, student and alum stories at www.olympic.edu/LAMOC.



I AM...
Dr. David Mitchell,
Olympic College
President

What's Inside:

- \$2 million donation for childcare center..... 1
- Planning for the future 2
- New building breaks ground 3
- Summer workshop for high school counselors 4
- Making military education more accessible..... 5
- Grant funds new manufacturing program 6
- Welding expands to OC Shelton..... 7
- New director for OC Poulsbo 8
- Flood victims get tuition help 9
- New vision and values statements..... 10
- Update on strategic initiatives 11
- Facts & Figures on OC..... 12
- Olympic College Foundation Report..... 13

2007-2008 Board of Trustees

- Peter Crane
- James Robinson
- Darlene Peters
- Douglas Sayan
- Alice Tawresey

\$2 Million Reasons to Celebrate



Photo features (L to R): John Mitchell, Betti Sheldon, Mike Connolly - Bremer Trustees, David Mitchell - OC President, Doug Sayan - OC Board of Trustee.

Bremer Trust Donates Funding to Build New Child Development Center

Many students at Olympic College must place their names on a waiting list as not enough spaces exist to put their young son or daughter in child care at the college. For students with young children, finding adequate and affordable care can be a challenge – one that keeps some students from continuing their education.

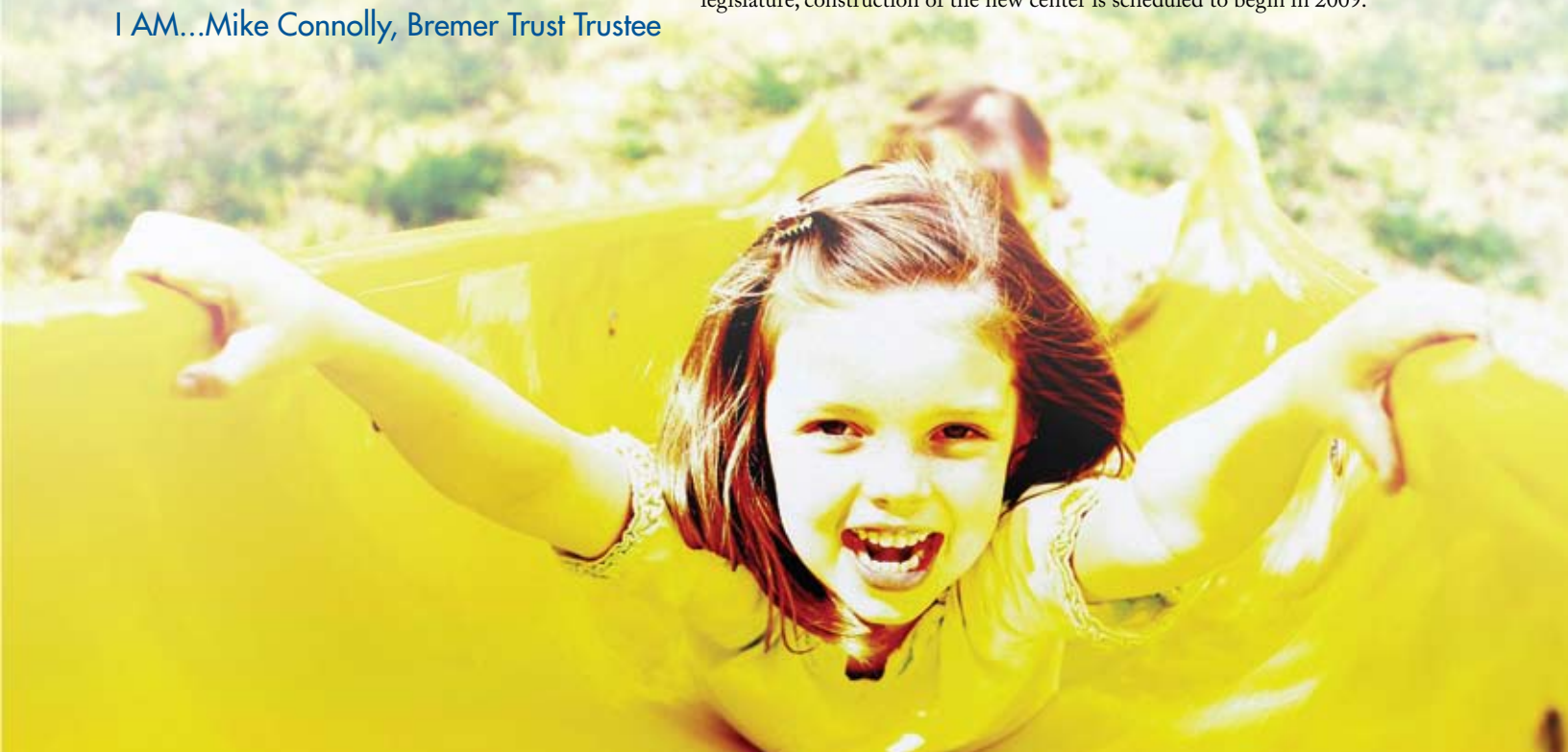
To address the need, the Bremer Trust donated \$2 million to build a new 10,000-square-foot child care and development center at the college. A kickoff party was held in Spring 2008 to celebrate the donation to fund part of the cost of construction. With the Bremer Trust donation and matching funds from the state's capital budget, Olympic College plans to bring all of the college's child care and development programs under one roof, which are currently scattered around the Bremerton campus.

The goal is to improve service and reduce costs by offering child care instruction and care in one location, add 42 new slots for children, and make more options available on campus while students attend classes. Thanks to the generosity of the Bremer Trust, which has donated more than \$6 million to Olympic College, the Sophia Bremer Child Development Center will triple the community college's child care capacity to serve about 200 children.

Currently in the design phase and waiting funding approval from the 2009 legislature, construction of the new center is scheduled to begin in 2009.

“We believe this project will meet the needs of Olympic College students, and we are grateful for the opportunity to support them.”

I AM...Mike Connolly, Bremer Trust Trustee



Planning for the Future

College Updates Its Facilities, Operations

As part of the college's long-term plan, a new building was completed, updates were made to facilities, and security enhancements were added in 07-08.

Building Upgrades

In October 2007, the college's new 55,000-square-foot Science and Technology building celebrated its grand opening. More than 100 people from across the college and the community participated in festivities. Dr. Bonnie Dunbar, president and CEO of the Museum of Flight, was the key note speaker.

The first new instructional building in 32 years, the building has larger laboratory space, bigger classrooms and state-of-the-art ventilation for science experiments. Technological improvements were also made to help students learn more efficiently. "It's by far more ergonomic, functional and a better space for learning all around," said Ted Baldwin, a college chemistry instructor who teaches in the new building.



Ribbon cutting ceremony for the new Sci-Tech building.

At the Bremerton campus, the main area interior of the Bremer Student Center underwent a remodel and plans are in place to build a new child development center. The college also completed a remodel of the student area of the Poulsbo campus.

Planning for Emergencies

Safety has been a top priority at Olympic College. In recent years, the need for emergency preparedness has become even more critical.

In 2007, the college formed an Emergency Preparedness Task Force to review, evaluate and update plans currently in place to help the college prepare for unexpected emergencies, including earthquakes, fires, floods, and violent situations. Since its inception, the task force has worked with police and fire departments to coordinate and upgrade security measures on its Bremerton, Shelton and Poulsbo campuses, updated emergency communication tools, started mapping access points across the college with police, and adopted new building emergency procedures.

"When upgrades to each campus are done, we will be able to evacuate the college in less than half an hour," said Bill Wilkie, facilities director for Olympic College and a representative on the task force. "These next steps will take the college to a new level of preparation for emergencies."

Expanding the College

Many projects are in the works or in the planning stages to enhance the quality of education at Olympic College in the next 10 years.

OC Bremerton:

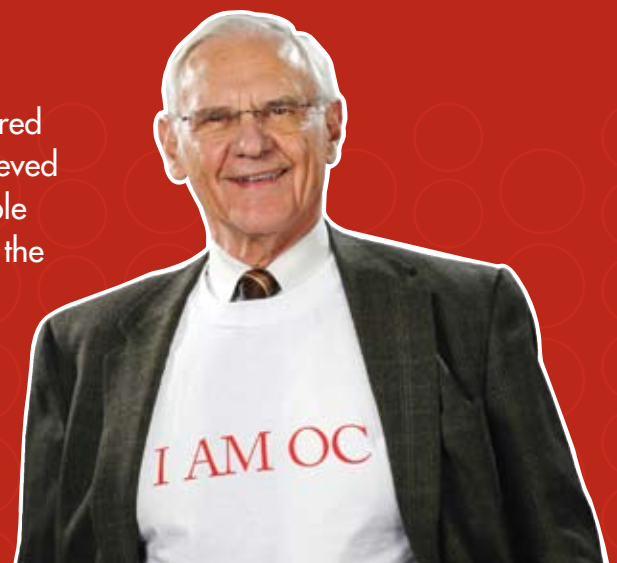
- **Humanities and Student Services Building**
 - ▶ Projected opening Winter 2010
- **Sophia Bremer Child Development Center**
 - ▶ Projected opening 2010
- **300-space Student Parking**
 - ▶ Projected completion 2010
- **College Instructional Center**
 - ▶ Proposed for 2015
- **Shop Building Renovation/Addition**
 - ▶ Proposed for 2015

OC Poulsbo and OC Shelton:

- Master plan in progress

“Olympic College constantly, every day, serves to insert better people back into our community – people better prepared with enhanced skills and wider horizons; people having achieved a greater sense of personal fulfillment through learning; people well on their way to more responsible citizenship. Its value to the community is, indeed, immeasurable.”

I AM...James Robinson,
owner James Robinson & Co. and OC donor



Breaking Ground



Photo features (L to R): Senator Derek Kilmer, OC Phi Theta Kappa Chapter President Fredrick Anderson, and Representative Christine Rolles. Also in attendance were Senator Phil Rockefeller and Representative Kathy Haigh.

Humanities & Student Services Building Construction Begins

In Spring 2008, a celebration was held for the ground breaking of a new Humanities and Student Services building, the latest structure under construction to replace an older building and prepare the college for meeting 21st Century education demands.

On Thursday May 8, 2008, more than 100 attended the event at the Bremerton campus and speakers shared the value the new building would bring to the college. The 80,000-square-foot facility will provide a new home for humanities courses such as the social sciences, languages, and writing. The building will also create a one-stop location for all student services, which will make it easier for students to get the information they need. Currently, students must visit as many as four locations to register for classes.

The environment will be more conducive to learning and will meet the needs of both students and the faculty. "I'm excited about the new building. It will put the faculty in a place where we can teach our students well," said Dr. Tom Cameron, an instructor of English at Olympic College. "It will be really good to be in an environment that matches with our abilities, and our desires and goals."

Among the services that will be offered at the new Humanities and Student Services Building include admissions, financial aid, registration and records, counseling, testing center, veterans' services, career center, Running Start, high school outreach, academic advising, access services and women's programs.

Paid for with \$20 million in state capital funds, construction is taking place on the site of the old Math and Science Building. Completion of the project is scheduled for 2010. The new structure is one of many construction projects that have been in the works at the college (see related story on changes to the college on page 2).

“I’m excited about the new building. It will put the faculty in a place where we can teach our students well.”

I AM...Dr. Tom Cameron,
OC English Instructor



Photo feature (L to R): Dr. Tom Cameron - OC English Instructor, Alice Tawressey - OC Board of Trustee, Dr. David Mitchell - OC President, Peter Crane - OC Board of Trustee, James Robinson - former OC Board of Trustee, Karen Hemmerly - OC Program Support Supervisor, Doug Sayan - OC Board of Trustee.

Making Connections



Photo features high school counselors visiting the OC Poulsbo campus during the First Counselor Summer Institute.

“Our goal was to familiarize local high school counselors with what Olympic College has to offer.”

I AM...Cindy Wyman, OC director of Program Development and Outreach for Workforce Development

Olympic College Hosts First High School Counselor Summer Institute

In its efforts to build community relationships and increase awareness of Olympic College among Kitsap and Mason county high schools, the institution hosted its first Counselor Summer Institute. The three-day workshop for high school counselors was held in June 2008. Twenty individuals from more than 10 area schools attended the institute. The program was held immediately after schools adjourned for the summer to make it easier for participants to attend.

Counselors toured the Bremerton and Poulsbo campuses and were introduced to the Shelton campus via a live video conference. During the workshop, Olympic College staff discussed program funding student services, financial aid and scholarship options for students. Resource binders were also distributed for the counselors to take with them. Counselors visited different programs, met and talked with student panel members and heard from students involved in student leadership activities.

Counselors shared that they learned Olympic College had more to offer than they realized and students have a multitude of options for continuing their education through courses, certificate and degree programs.

“Our goal was to familiarize local high school counselors with what Olympic College has to offer,” said Cindy Wyman, director of Program Development and Outreach. “The institute was fun, educational and gave the counselors personal experience and knowledge of the college’s three campuses, programs and services.”

OC Responds to Military's Unique Needs

In the 2007-2008 year, Olympic College received recognition for its efforts to meet the unique needs of the military, whether stationed nearby at Naval Base Kitsap on the Kitsap Peninsula or deployed across the world.

Olympic College received the Navy's endorsement to become a Navy College Program Distance Learning Partner in spring 2008. Students who choose the Associate of Arts Transfer (ATA) Degree in Business & Economics can complete it online or utilize self-contained courses on a portable USB drive. A student's military service is evaluated for college credit to help shorten the number of classes military servicemen and women need to take. The program is designed to prepare students to transfer to a four-year institution for completion of a business-related undergraduate degree.



Photo features an example of the OC portable thumbdrive that holds self-contained college courses.

In January 2008, Naval Base Kitsap was one of eight pilot sites selected for the Career Advancement Account (CAA), a program created by the Departments of Labor and Defense to provide funding for military spouses to pursue an education and contribute to their communities despite frequent moves. Olympic College, along with other community partners, participated with Naval Base Kitsap on the program. More than 160 military spouses took part during the year.

As a result of these and other programs, Olympic College was named one of 30 top military-friendly schools in the nation by *Military Advanced Education* magazine for 2007. It was the only higher education institution in Washington State to receive the award.

"The efforts and recognition that took place this past year have given the college more exposure, and have strengthened our presence among the Navy and our peers. We're proud that we can offer these programs to help create even more educational opportunities," said Wendy Miles, OC director of Military and Continuing Education.

“We’re making education even more convenient and accessible to the military.”

I AM...Wendy Miles, OC director of Military and Continuing Education



Manufacturing a New Idea

“We need trained employees who recognize the value of being part of a team, possess a good work ethic, and understand the manufacturing process. The Olympic College manufacturing technology program offers another way to teach our employees critical thinking and fundamental 'soft skills,' essential for success on the job.”

I AM...Guy Cashman, Rigging & Finish manager, SAFE Boats International

Grant Funds New Manufacturing Technology Program

While manufacturing products range from furniture for emergency communications departments, to concrete forms, to jet boats, the general need is the same: companies in Kitsap and Mason counties are seeking employees with basic manufacturing skills.

In response to the workforce skills gap, Olympic College pursued a grant in 2007-2008 to offer a new manufacturing technology program to fill the need. Funding for the program came from a Department of Labor (DOL) grant geared toward increasing capacity in programs identified as “Pipelines to Advanced Manufacturing.”

Olympic College along with Bellingham Technical College, Grays Harbor College, and Peninsula College applied for the three-year grant and were awarded \$1.5 million in 2007-2008 to start or expand programs at their colleges that fit within the DOL grant. Olympic College will receive a total of \$452,000 of the pie over three years to develop curriculum, purchase equipment and pay new faculty salaries for its program in manufacturing technology.

To begin developing the program, the college asked what employers needed to help build employee skills. Companies said they would provide the specific “hands on” training for individual jobs. They wanted the college to teach prospective employees the basics of working in manufacturing and “soft skills” such as being dependable, working as a team, communicating with others, and showing up on time.

The two-quarter, 27-credit program is expected to begin in 2009 at the Bremerton and Shelton campuses.

Shelton Campus Fires Up Welding Program

“The welding program in Shelton allows students to pursue welding certificates and degrees much closer to home.”

I AM...Dr. Dick Strand,
OC dean of Business and
Technology

The Shelton campus had a new program arrive in 2007. Welding, a staple on the Bremerton campus for sixty years, expanded to Mason County to meet the increasing need for high-demand welding skills in the area.

In fall 2007, the college partnered with Shelton High School to offer welding training that would benefit both high school and college students in the highly industrial Shelton area. Based on local salary figures, entry level welders can make between \$14 and \$15 per hour at manufacturing companies and \$20 or more per hour in shipyards.

Ron Buchanan, a student in the program, is a testament to the demand for trained welders in the area. Buchanan got a job before completing his welding degree. “This program has prepared me for what’s expected,” said Buchanan.

The welding program was partially funded by a \$192,500 high demand grant from the state to help create a more highly trained welding workforce. By bringing the program to Shelton, students would be able to stay in Shelton, rather than traveling to the Bremerton campus or elsewhere.

“This program allows students to pursue welding certificates and degrees much closer to home,” said Dr. Richard Strand, dean of Business and Technology. “It also serves the needs of employers by providing a larger, closer employment base.”

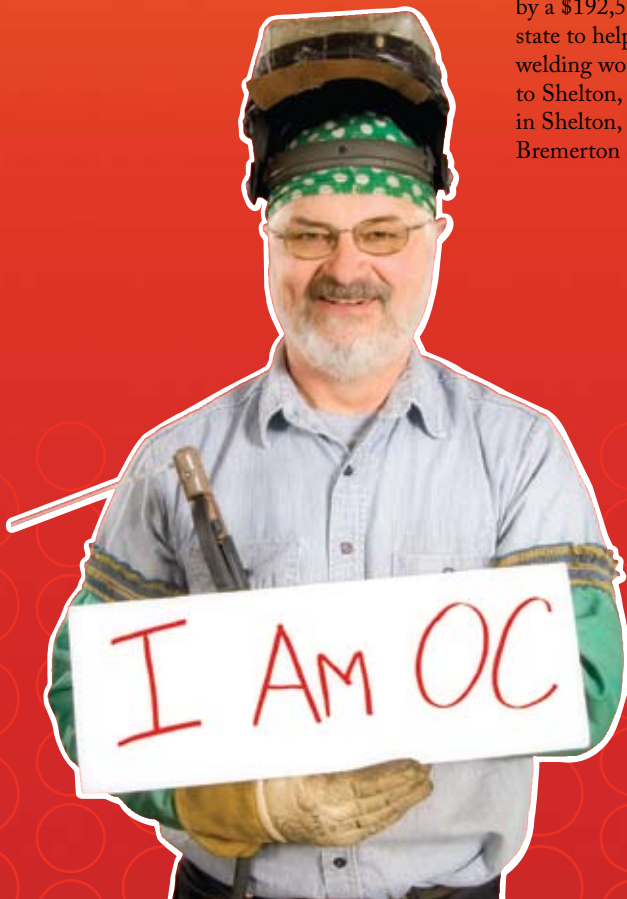
After gauging student demand and receiving positive responses to the program, Olympic College applied for a grant to move welding instruction to a larger facility from the high school. In fall 2008, the welding program will start anew in the Bronze Works, a foundry near Shelton that will be refurbished and adapted to meet the needs of the college. With state-of-the-art welding and cutting equipment and clean air technology, the 2,600-square-foot facility will be transformed into a full-service welding training facility.

In addition to the welding program, Olympic College is exploring plans to add electronics and manufacturing programs to Bronze Works in the coming years.

“Anytime we can provide residents and employers with new programs, it’s a good thing,” said Strand.

“I feel teaching is a special calling. All people are called to live out their lives on this earth and use their gifts to make the world a better place. It’s amazing to me the transformation that takes place in people’s lives when they get a glimpse of the possibilities.”

I AM...Chris Hobson, OC welding instructor for the new Shelton welding program



Poulsbo Campus Welcomes New Director

In Summer 2008, Dr. Kristin Poppo joined the Poulsbo campus of Olympic College as its new director. Poppo brought with her an extensive background in creating and implementing higher education programs, most recently directing a graduate residency program in education, environment and community at IslandWood on Bainbridge Island in Kitsap County, in partnership with the University of Washington.

A seven-year Poulsbo resident, Poppo made the move to Olympic College to promote social justice and educational equity. She was impressed by the college's broad range of educational opportunities, offering everything from English as a Second Language classes to bachelor's degree transfer programs.

"Community colleges provide opportunities for all," Poppo said. "I'm really excited to work with community leaders and faculty to identify projects that will meet the needs of the community."

Poppo plans to continue the work of the previous director and create additional programs to distinguish classes offered in the North Kitsap area.

The hiring of Poppo followed the recent remodeling and renovation of Olympic College's Poulsbo campus in North Kitsap County. Completed in late 2007 with funds from the state capital budget, the \$500,000 project reworked the existing layout to create more space efficient design, including a study area, tutoring room, private space to meet with students, and offices for faculty and students.




Kristin Poppo

“I'm really excited to work with community leaders and faculty to identify projects that will meet the needs of the community.”

I AM...Kristin Poppo, Poulsbo campus director





Helping Students in Need

“The affected students would not have been able to attend Olympic College were it not for this tuition waiver.”

I AM...Dr. Richard MacLennan,
Vice President of Student Services

Tuition Help for Flood Victims

As part of the college's practice to help students in need, Olympic College stepped in and applied for a state program that allowed the institution to waive 80 percent of tuition costs for students in Kitsap and Mason counties affected by a severe storm in December 2007.

Olympic College students in both counties who suffered an economic loss or hardship as a result of the storm or flooding could apply and receive the tuition waiver. A state board that represents all 34 state community and technical colleges awarded funding to Olympic College for the program, which the institution matched to ensure that Olympic College students could receive financial help immediately. In total, \$6,341 worth of tuition was waived in winter 2008 and \$2,875 in spring 2008 for students.

Dr. Richard MacLennan, vice president of Student Services, noted that the students who applied for the waiver were grateful to continue their education at such a traumatic time in their lives. “We had some students who had been flooded out of their dwellings, or lost their jobs because of a business flooding, so this waiver was a great help to them,” MacLennan said.

The application process required documentation of the impact of the storm on students' lives, including information gathered from FEMA (Federal Emergency Management Agency) applications, insurance claims and photos of the devastation.

“The photos showed substantial damage to homes and property,” said MacLennan.



Guiding Principles

Photo features OC employees (L to R):
 Karen Hemmerly, Lisa Morrison,
 Micky Buchanan, Judie Jose, Elaine Urrutia,
 Debbi Campbell, Jeanne Paluck,
 Imelda Moore

New Vision, New Values for OC

With new vision and values statements to guide it, Olympic College is defining itself as a progressive institution that will grow with the communities it serves.

More than a decade ago, the college developed mission, vision, and values that would lead the institution and serve as a compass for its strategic initiatives, goals and objectives. As the college and local communities changed over time, a new set of statements was developed to help keep the college moving forward.

Beginning in 2006, input was sought from students, faculty, staff, college administration and community members to develop statements that would focus the college for the next 10 years. Their thoughts and comments were incorporated into new vision and values statements. (The mission was found to well represent the college and was not revised.) After two years of development and discussion, the final statements were approved by the college's Board of Trustees in summer 2008.

The mission serves as the umbrella for everything the college does. The new vision statement focuses on what the college will look like in the future and is a roadmap for where the college wants to go. Its focus is to promote life-long learning for a global society, empower employees with resources to achieve the college mission, and be recognized as a cornerstone of learning via partnerships and outreach.

The values statement provides guidance on how the college will "act" to meet the mission and the vision. It is also the engine that drives college. The values statements focus on:

- A quest for community and environmental health
- The practice of civil and constructive discourse and respect for diversity
- The thoughtful use of finite resources

"Our college and our community created the statements and helped us discover where we want to be and what the college's role is in the future. This process also helped us identify

ways as a college we can help each other accomplish goals," said Kim McNamara, director of the Shelton campus, who lead the effort to develop the new vision and values statements. The new statements will be used to help with future planning of the college.

The new vision and values statements can be read online by going to www.olympic.edu/AboutOC.

“Our college and our community created the statements and helped us discover where we want to be and what the college’s role is in the future.”

I AM...Kim McNamara,
 Shelton campus director

College Goals

Taking Aim at the Future: 2007–2010 Olympic College Strategic Initiatives

The two-year strategic planning process is an effort to ensure Olympic College is meeting the needs of the students and the community. The 2007-2010 strategic plan was created with involvement by the college. It provides a common vision and actionable plan for the future. Each year, steps are taken to meet established goals and objectives of the initiatives. Six initiatives were selected and implemented beginning Fall 2007. Progress for the 2007–2008 year is mentioned below.

Strategic Initiative #1

To facilitate student progress toward goal completion, implement a seamless advising process and a comprehensive student success program.

- The new student advising center reporting structure was changed to facilitate a more seamless exchange between the advising center and faculty. The advising section was also improved to help students.

Strategic Initiative #2

To be more deliberate and effective in our efforts to deliver education at a distance, finalize and implement a long-range distance education plan.

- Registration processes were identified and mapped so they could be adapted to distance learning and discussions were started to create a distance student entry process.
- Two possible distance programs were identified that would allow students to complete degrees in the same time as a traditional program.

Strategic Initiative #3

To be more mindful of our diversity, to improve the inclusiveness and efficiency of our communication processes, and to enhance the quality of our interpersonal relationships, initiate more effective and respectful communication practices.

- More than 350 people participated in identifying and understanding the college mission, vision and values to help the college reaffirm and create new statements.
- A variety of professional development opportunities and training were provided and new methods of communication across the college were developed.

Strategic Initiative #4

To maximize community access to Olympic College, especially for underrepresented and underserved populations, develop and implement an ongoing enrollment management system that informs instructional programs, student support services, and facilities planning.

- Enrollment increased for military and other populations as a result of college efforts. Proposals for 2008-2009 were funded to continue progress on the initiative.

Strategic Initiative #5

To focus attention on learning and to help students, faculty, staff, and administrators see themselves as a community of learners, foster a college-wide culture of assessment that embraces the assessment of learning outcomes and promotes the scholarship of teaching and learning.

- Faculty signed up or participated in assessment activities and shared experiences and project results with the college and at a state conference.

Strategic Initiative #6

To increase the educational options available to our communities, actively pursue opportunities to bring baccalaureate programs to our district.

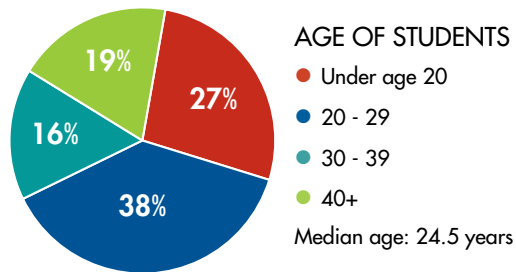
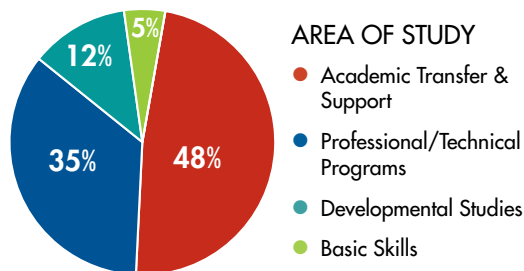
- Documents for the Bachelor's of Science in Nursing accreditation process were drafted and the college began addressing activities that need to be implemented by a baccalaureate granting institution.
- The college is in the final stage of approval with a university to help students complete a bachelor's degree in engineering.

2007-2008 Snapshot

STUDENT DEMOGRAPHICS

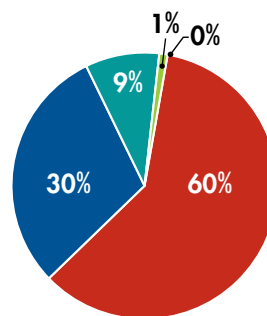
13,341 Annual Headcount
7,514 (Fall 2007 Headcount)
5,203 Total FTE (Annualized)
4,897 Total FTE (Fall 2007)
58% Female
42% Male
21% Students of color
6% Students with disabilities
44% Full-time—12 or more credits*
56% Part-time—less than 12 credits*

*Credits reflect federal standards for full-time.



FACULTY & STAFF

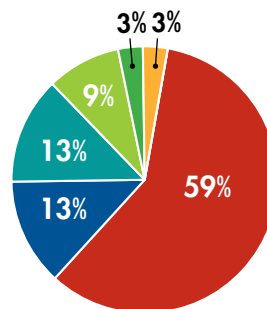
2007	2008
115 Full-time Faculty	118 Full-time Faculty
375 Adjunct Faculty	401 Adjunct Faculty
80 Administrative Staff	81 Administrative Staff
159 Classified Staff	163 Classified Staff
340 Classified Staff, Part-time	324 Classified Staff, Part-time
313 Student Employees	353 Student Employees
1,382 TOTAL	1,440 TOTAL



FINANCIALS - REVENUE

State Appropriation	\$22,171,459
Tuition & Fees	10,824,665
Interest Income	385,346
State Grants and Contracts	3,518,740
Contract Training	161,703
Federal Grants and Contracts	146,204
Donations	792
Other Sources (Includes Fines, Admin. Allow)	55,859
Total	\$37,264,770*

*These figures reflect actual revenues and expenditures for 2007-2008 and include a planned drawdown of fund balance.



FINANCIALS - EXPENDITURES BY PROGRAM

Instructional Services	\$21,713,652
Student Services	4,983,170
Institutional Support	4,970,441
Plant Operations/Maintenance	3,263,221
Primary Support Services	1,260,321
Learning Resources Center	1,304,846
Total	\$37,495,652

2007 - 2008 Capital Expenditures is \$6,234,086

NOTE: 2007-2008 figures were current at time of printing *Facts & Figures* publication, September 2008.

“OC inspired me to have goals and to work hard to achieve them, for both academic and personal growth.”

I AM...Chuck Taylor, OC alum



The Olympic College Foundation Legacy Partners Endowment Campaign *continues Momentum*

Legacy Partners Campaign PHASE I – 2006-2008

Current gifts received during this phase:
\$4,000,000

Endowments Funded (New/Current/Accruing)

Haselwood Library Endowment
Robert Stewart Endowed Scholarship
James & Audrey Robinson Endowment
Jerry & Esther Maury Endowed Scholarship
James T. & Emily S. Johnson Endowed
Scholarship
Gordon & Muriel Williams Endowed
Scholarship
Les & Betty Krueger Endowed Nursing
Scholarship
Helen Langer-Smith & Meredith Smith
Endowed Scholarship
TriFam Foundation Endowed Scholarship
Patterson-Dominy Endowed Scholarship
Frances Sutton Endowed Nursing Scholarship
Scott Jacob Carlson Endowed Scholarship
Thomas Graham Library Endowment
Thomas Graham Endowed Scholarship
William D. Harvey Endowed Scholarship
Bernice Mitchell Endowed Scholarship
Maura Pilet Marler Endowed Scholarship
Dawkins Family Endowment
Pauline Dahl Endowed Nursing Scholarship
Joseph & Mary Ramaker Endowed
Scholarship
Thomas Triggs Endowed Nursing Scholarship
Greta Jose Endowed Scholarship
Anthony's HomePort Endowed Scholarship
George Abbey Endowed Scholarship
Olympic College Textbook Endowment

Planned/Legacy Gifts Recorded

John & Barbara Stephenson
William D. Harvey
James & Joy Page
John & Terri Hern
Ken & Kaye Winslow
Ernest & Dreena Taggart
Joseph Boyles
William Maiers & Jolene Culbertson
Douglas & Cheryl Berger
Peter & Paula Crane
Tracy Digiovanni
Omar Boulds
David Mitchell
Marilee Hansen
Ruth Ross
Lawrence & Diane Marler

During the previous year, *The Legacy Partners Endowment Campaign* continued to pick up steam. Because a college education is viewed as the baseline for future success in the world, this campaign is committed to making college accessible to all students who seek the opportunity to improve their lives through learning. The focus is to raise a minimum of \$5 million for endowments, with an emphasis on student scholarships. Once the goal is met, the permanently invested dollars will generate \$250,000 annually, in perpetuity, to support Olympic College students.

So far, more than \$4.1 million has been raised during the “quiet phase” of the campaign, including several named scholarship funds that honor key supporters of Olympic College’s

mission. These new gifts support students pursuing nursing, teaching, math, science, engineering, music, fine arts, culinary arts, business, and multidisciplinary subjects. The campaign’s endowments will make education a reality for generations of students.

Each student who attends Olympic College benefits from the experience, reaping a lifetime of rewards from successfully completing their education. The community reaps rewards as well – gaining educated, accomplished citizens who are committed to the region, to their families, and to their professions.

The Legacy Partners Campaign will create opportunities now and for generations to come.

“It is a great honor to know that someone has left a legacy and trusted that I will use their gift wisely to better my future.”

I AM...Trevor DoBell-Carlson,
OC student and scholarship recipient



{ Growing Generations
of Success }

**2007-2008
OC Foundation Board**

Barbara Stephenson,
President

Tracy DiGiovanni,
First Vice President

Dr. David Mitchell, Secretary

Tim Lavin, Treasurer

Mike Levi,
Immediate Past President

Doug Berger

Jeff Brein

Shawna Bliss

Shannon Childs

Duane Edwards

Lynn Fleischbein

Drew Hansen

Marilee Hansen

William Harvey

Terri Hern

Judy Mentor Eagleson

Jim Johnson

Jim Page

Jim Robinson

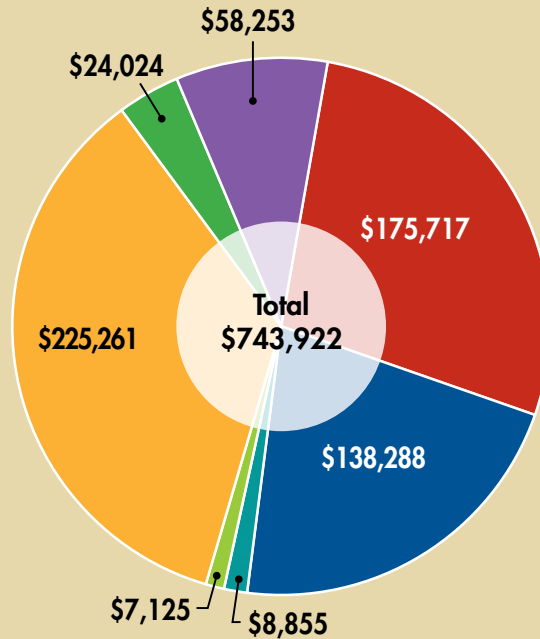
Ken Winslow

Ed Wolfe

Fund Balance and Revenue & Support

The fund balance of the OC Foundation on June 30, 2008 was \$7,426,903. Revenue and support totaled \$743,922.

Support to Olympic College included scholarships, college programs, student emergency grants, and faculty and staff professional development awards.



SCHOLARSHIP AND PROGRAM SUPPORT

● Scholarships	\$175,717
● College Programs	\$138,288
● Faculty/Staff Grants	\$8,855
● Student Emergency Grants	\$7,125
● Other Support	\$225,261

OPERATING EXPENSES*

● Special Events	\$24,024
● Operations	\$58,253

*unaudited figures for illustrative purposes only



“Scholarships have helped me stay in school to complete my education and become self-sufficient. I know I will be able to provide myself and my son with a strong, stable future.”

I AM...Christin Hundley, OC student and scholarship recipient

Honor Roll of Donors

The Olympic College Foundation thanks all its contributors for the 2007-2008 year and the valued partnerships that have been developed. We look forward to working with you over the next year.

Endowment Donors

OLYMPIANS (\$100,000+)

James & Audrey Robinson
James T & Emily (Sue) Johnson
Helen Langer-Smith & Meredith Smith
Muriel Williams

PATRONS (\$25,000+)

Ralph Carlson & Margarita Garcia
Suzanne Coleman
Louis Graham
Raymond & Sharon Soule

ENDOWMENT CONTRIBUTORS (up to \$24,999)

Donn Dahl
Joni & Charles Earl
Drew Hansen & Julie Cooper
Merritt & Betty Major
David & Patti Mitchell
Bernice Mitchell
David Stewart
TRIFAM Foundation
Robert Borquist
Annalisa Gorman
Larry & Karen Gorman
Robert & Margaret Graham
Phillip & Margaret Graham
Lowell & Dolores Hardison
Patricia & Phillip Jose
Mary Ann & Richard Kelso
John & Theresa Major
Georgia Mankowski
Lillian McDermott
Priscilla & Arthur Orcutt
Tim & Shirley Pettersen
David Toren & Marilynne Gardner
Patricia Triggs & Jim Trindle
Washington Public Employees
Association
Fran Adelman-Bricker
Anonymous
Phil & Karen Best
William & C.B. Cassidy
Judith & Dennis Cunneen
Elaine Deitchman
Marilyn Drengson
Kay Gordon
William Harvey
Ervin Jensen & Donna Flaugher-Jensen
Jack & Katherine Jensen
Kevin & Julie McGreal
Paul & Ellen Middents
Larry & Lane Parker
Sherrilyn Sibold
Janet L. & E. Paul Tezak

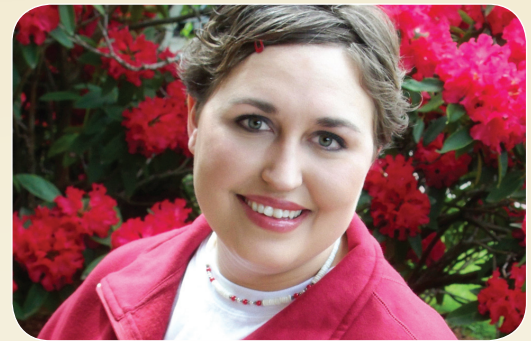
Designated Gift Donors

BENEFACTORS (\$5,000+)

Anonymous
Estate of Benjamin Boyce
Martin Luther King Memorial
Scholarship Fund

COLLEGE CLUB (\$500+)

Anonymous
Tim Arnold
Art Anderson Associates
Bailliage de Seattle Chaine des
Rotisseurs
Mike & Marcia Barrett
Douglas & Cheryl Berger
William & Monica Blackwood
Cary Bozeman
Bremerton High School Class of 1942
Lois Bresaw
Shannon & Gerald Childs
Peter & Paula Crane
Dance For A Wish
Drexel University
Don & Elizabeth Drury
Drury Construction Co., Inc.
Express Personnel Service
Faith Lutheran Church
Fred & Bonnie Finn
Finninsula Foundation, Inc.
Mary & Timothy Garguile
Greater Poulsbo Chamber of
Commerce
Barbara Hammerman & Raymond
Lavine
Harrison Medical Center
Joanne Haselwood
Terri & John Hern
Edwin & Janice Hopper
Dean & Judith Jenniges
Robin & Lori Kearney
Joseph & Dorothea Kearney
Mary Ann & Richard Kelso
Kitsap Bank
Kitsap Chapter - MOAA
Kitsap Credit Union
Kitsap Sun
Marine View Beverage, Inc.
James & Louise McGonigle
Roger Meyer & Sydney Costigan
Cotton
Herbert Myers
Jim & Joy Page
Kathryn Quade
Jerry & Nancy Reid
Rice Fergus Miller Architecture &
Planning, LLP
James & Audrey Robinson
Ronald & Lillian Ross
Tim & Shirley Ryan
Charles & Beverly Salmon
Clint & Martha Shinkle
Barbara & John Stephenson
Richard & Sigrid Strand
Dennis & Dana Willerford



“I chose Olympic College because I wanted the best training possible. Scholarships allowed me to pursue my education and begin a new career.”

I AM...Maurine Simons, OC student and scholarship recipient

Windermere Foundation
Ken and Kaye Winslow

CENTURY CLUB (\$100+)

Roger Allen
American Society of Civil Engineers,
Kitsap Peninsula Branch
Eric & Sandie Anderson
Gerriane & John Babbo
Dave & Darla Bernstein
Donald & Joan Boehme
Scott & Gail Bosch
Clara Brandewie
Howard & Ellen Brooks
Judith & Kenneth Brown
Josh Brown
Robert & Patricia Brueck
James & Julia Bryan
James & A. Calahan
Stephanie Cline
Elizabeth Correll
Jenny Dragovich
Duane & Patti Edwards
Ruth & Ted Enderle
Jerry & Barbara Garner
Kenneth Gluch
Marilee Hansen & Rob Woutat
Joan & Michael Hanten
William Harvey
Tom & Patty Henderson
Theodore & Sandra Hodge
Patricia & James Ingalls
Dale & Suzanne Ireland
Kitsap Community Resources
Kitsap County School Retirees
Association
KPS Health Plans
Leonard & Brenda Kruse
Charles & Margaret Leslie
Liebert, Morgan & Fleischbein, PS
Bonnie Loop
Richard & Theresa MacLennan
Ray & Kay Magerstaedt
Barbara Martin
Will & Karen Maupin
James & Carolyn McClurkan
Nancy Meyer
Larry & Roseann Mitchell
David & Patti Mitchell

Tom & Kathy Nordlie
William & C.J. North
Olympic College Exempt Association
(OCEA)
John & Nelda Patton
Carmen & Eva Pinto
Puget Sound Early Birds
Steven & Terri Rice
Phil & Anita Rockefeller
David & Carlene Rogers
Wendy Rohrbacher
Betti Sheldon
Debra Smith
Geoff and Betsy Pentz
Southard, Beckham, Atwater & Berry,
C.P.A., P.S.
Ed & Lori Stern
Ken Surratt
Robert Swackhammer & Karen
Anderson
Janet L. & E. Paul Tezak
Jeffrey & Laurie Tolman
Roger & Malinda Wagner
Rick & Ada Wesseling
Wet Apple, Inc
Janell & Ronald Whiteley

FRIENDS (Up to \$99)

Robert & Kim Abel
Susan Aho
Steven & Barbara Baldwin
Beverly Baldwin
Janet Bayly
Carole Bedwell
Sonia & Bill Begert
Sylvia Blatt
George & Marcia Booth
Bremerton Main Street Association
Patricia Caldwell
Terrence & Pam Carns
Irene & Daniel Caulpetzer
Cedar Heights Sunshine Fund
Center for Strengthening the Teaching
Profession
Ralph & Barbara Clark
Michael & Jean Connolly
Joseph & Patricia Crivellone
Gary & Marilyn Cunningham
Darrel & Ladonna Deide
R. & J. Devereaux



“The legacy gift that provides my scholarship allows me to focus on school and be the very best student I can be.”

I AM...Natalie PeaPea, OC student and scholarship recipient

Jay & Carol Eldredge
 Gay Elliott & Robert Fowler
 Nicholas & Margaret Ensrude
 J. Peter & Sandra Flatness
 Judith & Ronald Fowler
 Betty Jo & Denis Fuchs
 Donald & Frances Heng
 Heritage Highlands Women's Golf Association
 Charlene & Berlyn Hodges
 Robert & Vera Hope
 Lugene Huston
 Thomas & Ann Jacobs
 James & Loretta Jankowski
 Larry & Judy Johnston
 James & Mary Lynn Kintner
 Dave & Susan Kjome
 Joseph Koroma
 Patricia Litaker
 Larry & Lucinda Littlefield
 Joy Lockerby
 Douglas & Janice McLemore
 Richard & F. Meyers
 Annetta Montgomery
 Bob & Fran Moyer
 Kathie & Ron Olson
 Alex & Marie Pallagi
 Kay Phillips & Fred Timmerman
 Robert & Thelma Puhn
 Frank & Marie Rains
 Edward & Carole Reiley
 Wallace & Julie Ross
 Eleanor Saulls
 Sheila & Terry Scatena
 Judie & Don Schmidt
 Barbara Schutz
 Deborah Sesow
 Glen & Lisa Simonsen
 Alan & Karen Skare
 Stuart & Joan Smythe
 Jean Springer
 Patricia Sterns
 Michael Stevens
 Coyet Stimpson
 Fred & Bonnie Stringfield
 Alice & John Tawressey
 Dennis & Frances Terrill
 Jesse & Doris Thompson

Virginia Triggs
 Herbert Vonhof
 Ernest & Betty Wanzer
 John & Jeanne Weaver
 Bill & Krista Webb
 Robert & Doris Whitmarsh
 Karen & Paul Yarnell

Annual Fund Donors

BENEFACTORS (\$5,000+)

Courtesy Auto Group
 Kitsap Bank
 Suquamish Tribe

PRESIDENT'S CLUB (\$1,000+)

American Marine Bank
 Anonymous
 Wendell & Betty Arnold
 Art Anderson Associates
 Bradley Scott, Inc.
 Bremerton Bottling Co., Inc.
 Lois Bresaw
 Shannon & Gerald Childs
 Citigroup Smith Barney
 Concurrent Technologies Corp.
 Philip & Beth Cornish
 Peter & Paula Crane
 Don & Elizabeth Drury
 EMBARQ
 Finninsula Foundation, Inc.
 Barbara Hammerman & Raymond Lavine
 Marilee Hansen & Rob Woutat
 Joan & Michael Hanten
 Dana Harmon & John Phillips
 Harrison Medical Center
 Terri & John Hern
 Glenn & Florence Huntley
 James & Emily Johnson
 Kitsap Credit Union
 Lester & Betty Krueger
 Helen Langer-Smith & Meredith Smith
 Tim & Susan Lavin
 Mike & Vickie Levi
 Barbara Martin
 Sue McLain
 Mentor Company
 Michele Nilsen-Wasson

North Kitsap Auto Rebuild, Inc.
 Port Madison Enterprises
 Puget Sound Energy
 Quinn/Brein Public Relations
 James & Audrey Robinson
 Ruth Ross
 Tim & Shirley Ryan
 Anonymous
 Douglas & Marilyn Sayan
 Richard & Christine Sollom
 Geoff and Betsy Pentz
 Sound Dive Center
 Barbara & John Stephenson
 Richard & Sigrid Strand
 TeleTech
 United Moving & Storage
 Warren & Joann Van Zee
 Anita Westrum-Grumer
 Ken and Kaye Winslow
 Edward Wolfe & Wendy Miles
 Wolfe Law Office PLLC

COLLEGE CLUB (\$500+)

Tim Arnold
 Douglas & Cheryl Berger
 Shawna & Donald Bliss
 Scott & Kendra Broadbent
 Mary & Timothy Garguile
 William Harvey
 Dale & Suzanne Ireland
 Matthew & Susan Joyce
 Patricia & John Lantz
 Law Office of Robert T. Beattie, P.S.
 Roger & Katoo Sherrard
 Alice & John Tawressey
 Janell & Ronald Whiteley

CENTURY CLUB (\$100+)

Robert & Kim Abel
 Laurie & Stephen Adamson
 Catherine & John Ahl
 Air Combat Command Intelligence/
 Resource Management Division
 Larry Akers
 Bradley & Claudia Allen
 Bess Alpaugh
 Dennis & Connie Anderson
 Michelle Andreas
 Jan Angel
 Cruz & Maureen Arroyo
 Andy Barber
 Janet Bayly
 Christopher & Monica Beckham
 Martin & Susan Beisley
 Eileen Black
 Anne & Wayne Blair
 BMC Consulting
 Gloria & John Boettcher
 Roger & Elisabeth Bondy
 Scott & Gail Bosch
 Stephen & Judith Boyer
 Laura Boyle
 Cary Bozeman
 Christine & Mike Brinton
 Brockman Builders, Inc.
 Judith & Kenneth Brown
 Bradley & Deborah Brown
 Josh Brown
 Bridgid & Gary Brunson
 Harriette & Jimmy Bryant
 Natalie Bryson
 Jeanne Buesch
 Rick Cadwell
 Sandra Carlson
 Art Castle
 Chaffey Homes Inc.
 Lorraine Clark
 Stephanie Cline

Michael & Jean Connolly
 Leonard Costello & Patricia McKenzie
 Judith & Dennis Cunneen
 Gary & Marilyn Cunningham
 Brian Dahl
 Thomas & Nancy Danaher
 Irmgard & Jeffrey Davis
 Jerald & Becky Deeter
 Robert & Maryellen Dietz
 Susan Digby
 Tracy & Dale DiGiovanni
 Tom Diller
 Pam & Frederick Dore
 Stacy & John Dore'
 Walt & Nancy Draper
 Drury Construction Employees
 Jonee Dubos
 Eagle's Nest Catering, Inc.
 Duane & Patti Edwards
 Katherine & Sean Erfe-Johnson
 Dave & Mary Beth Fergus
 Greg Fields
 Marilyn Finlay
 Fred & Bonnie Finn
 Edward & Patricia Forman
 Robert & Jane Fredericks
 Betty Jo & Denis Fuchs
 Karen Fusco & Greg Memovich
 Gary & Debra Garlin
 Gwen Garrett
 Charlotte & Ramon Garrido
 Anthony & Sara George
 David & Susan Gitch
 Budd Gould
 Paul & Margery Greenawalt
 Douglas & Martha Groneman
 Kathryn & Gary Haigh
 Teresa Haigh-Braget & Wade Braget
 Hanley Construction
 Mark & Mickie Hartman
 Russell Hartman & Sheri Thomas
 Jennifer Hayes & Matt Taran
 Mark & Lisa Helling
 Karen Hemmerly
 Ward & Jane Hinrichs
 Nathaniel Hong
 Lori & Joseph Hudson
 Lugene Huston
 Elizabeth & Thomas Hyde
 Margaret & Larry Iversen
 Darlene & Theodore Johnsrude
 Linda Joyce & Dion Ingram
 Arnie Kegel
 Larry & Pamela Keller
 Jessica Kennedy
 Tom & Marcia Kilbane
 Derek & Jennifer Kilmer
 Kitsap Community Foundation
 Kitsap County Commissioners
 Kitsap Mental Health Services
 Darlene Kordonowy
 Leonard & Brenda Kruse
 Steve & Julie Landau
 Lander Custom Designed Homes, Inc.
 Law Office of Lynda H. McMaken PS
 Randall & Jan Lawrence
 Liberty Bay Auto Center
 Liebert, Morgan & Fleischbein, PS
 Wayne & Karen Lindberg
 Ralph & Dorothea Lintz
 Lois Jane Lugg
 Richard & Theresa MacLennan
 N. Harry & Jane Martin
 Carolyn Mast
 H. Duwain & Virginia McBride
 Arthur & Teddy McCarty
 James & Carolyn McClurkan
 Milton & Camille McConnell

Bob McIntosh
Clif McKenzie
McKinney Communication
John McLain
Kim McNamara
McVey Marketing, Inc.
Raleigh & Nancy McVicker
Joyce Merkel
Judith Meyers
Dianne Moore
Ardis Morrow
Bob & Fran Moyer
Ronald & Mary Muhleman
Anne Mulligan
Ralph Munro
Hugh Nelson & Brenda Prowse
Alan & Ellen Newberg
William & C.J. North
Cheryl & Andrew Oakley
Sally & Steven Olsen
Olympic Resource Management
Mary Page
Parker Lumber
Joanie & Justin Pearson
Penny's Team, Inc.
People's Bank
Gaston & Lynn Peter-Contesse
Daniel & Catherine Peters
Darlene & Richard Peters
Port Orchard Dental Care Center
Ginny Price
Charlotte Purl
Janice Richardson
Risk Placement Services, Inc.
Jill & Greg Robinson
Phil & Anita Rockefeller
Rebecca Rogers-Kombol & Barry Kombol
Kathleen & William Sanford
Gussie Schaeffer-Hayes & Richard Hayes
Manfred Schmiedl
Agnes Schultheis
Seattle Automotive Distributing, Inc.
Gary Sexton
Betti Sheldon
Shiers, Chrey, Cox, DiGiovanni Zak & Kambich LLP
Celia Sipinens
Ann Sleight
Earle & Sandra Smith
Debra Smith
Dana Marie Smith
Chad Solvie
Louis & Joan Soriano
Soriano and Soriano, Atty. at Law
Southard, Beckham, Atwater & Berry, C.P.A., P.S.
Theodore Spearman
John Stanley
Ed & Lori Stern
Steve & Lisa Stirrett
Linda Streissguth
Jim Sund & Anne Mulligan
Claire & Jeff Swan
Synergy Systems, Inc.
Georg Syvertsen
Richard & Marlene Taylor
The Rucker Group, Inc.
Andrew & Denise Thibeault
Richard & Susan Tift
William & Cara Tighe
Susan & Joseph Tollefson
Susan Tornay
Town & Country Markets, Inc.
Larry Tuke & Brooke Healy
Victor & Bonnie Ulsh
Valley Nursery Inc.
Michelle Van Berkom & Brian Yelland
Carlos Wall
Vincent & Mary Walton

Scott Ware & Eleanor Carey
Henry & Eleanor Warner
Pamela & Frank Warner
John & Alice Watson
Jack & Sarah Webb
Daniel & Barbara Weedon
West Sound Workforce
Wet Apple, Inc
Joyce Wilson
Gary Winter
Linda & Cardis Yerger
Denise Zaske

FRIENDS (Up to \$99)

James & Cecelia Adrian
Ivaly & Scott Alexander
Anonymous
Heather Ashley
Theodore Baldwin
Sonia & Bill Begert
Pamela Bilodeau
Jane Blackman
Carol Blakley
Pamela Borne
Olav & Cynthia Brakstad
Ron & Jocey Bright
Bridgid and Gary Brunson
Thomas Cameron
Lisa Campbell
Beverly & Donald Cheney
City of Seattle
Eric Cowan
J. Ryan & Roger Davis
Annie Davis
Michael & Margaret Droke
William & Ruth Drollinger
Angela Elauria
Marcus Elliott & Christina Krisologo-Elliott
Larry & Mary Eyer
Lynn Fleischbein
Carma Foley
Marie & Kenneth Freeberg
Cameon Geyer
Judith & Dennis Gregory
Anonymous
Brandon Harnisch
Athena Higgins
Anonymous
Charles Horton
Mark Hughes
Gary & Esther Hunsaker
Chad & Heidi Hutchinson
Thomas Jacobs
Donald & Sybil Jones
Anonymous
Michael Kilgore
Andrew Kosusko
Aaron & Kelli Leavell
Stuart Leidner & Nina Chambers
Phyllis & George Lombardy
Jack & Beatriz Longmate
Amy McBride
Susanne & Guy McCabe
Dale & Charlene McConnell
Franklin Meade
Judith Meyers
Kathy & Gil Michael
Frederick Moore
Bonnie Ollos
Priscilla & Arthur Orcutt
Kathleen Organ
Barbara Parker
Leanne Pearson
Kathryn Quade
Harold & Lois Richardson
Candy Roach
Wendy Rohrbacher
Angel Ryan
Joanne & Joe Salas

Marian Sanders
Donald Serry
Margaret Smith
Allison Smith
Elizabeth Smith
Delores Spann
Barbara Stark
Michael Stevens
Kjell & Marilyn Stoknes
Gim Supek
Cathy Taylor
Esther Tirima
Richard Tizzano
Susan Tollefson
Ted & Patricia Turner
Dusty Van Gelder
Kay & Tim Vergillo
Mary Vincent
Mark Westlund
Elizabeth Wiles
Kelly Woodward
Linda Yerger

In-Kind Donors

BENEFACTORS (\$5,000+)

Donald & Ann George
Kitsap Sun

COLLEGE CLUB (\$500+)

Joe Brazeau
Jeff & Merna Brein
Amy Burnett & Earle Sande
Terri & John Hern
Microsoft Corporation
National Geographic GREEN GUIDE Magazine
Pearson Photography
Performance Sign Products
Sportsman's Warehouse
Valley Nursery Inc.

CENTURY CLUB (\$100+)

August Wynn Fine Foods
Shawna & Donald Bliss
Bremerton Bottling Co., Inc.
Central Market
Columbia Hospitality, Inc.
Dream Dinners
Gold Mountain Golf Course
Marilee Hansen & Rob Woutat
Drew Hansen & Julie Cooper
Kitsap Golf and Country Club
Linna & Don Lawrence
Marriott Spring Hill Suites
Clear Creek Nursery
Naomi & John Pursel
Six Star
Starbucks
Suquamish Clearwater Casino Resort
The Candy Shoppe, LLC

FRIENDS (Up to \$99)

Admiral Theatre Foundation
James & Elaine Allen
Amgen
Amy's on the Bay
Anthony's Restaurant
William Anton
Julie Atkins
Azteca - Silverdale
Douglas & Cheryl Berger
Dana Blackburn
Audrey Boyer
Charles & Gloria Carpenter
Ketuvah Chynoweth
Coldstone Creamery
Courtesy Auto Group

Vince Cruz
Judith & Dennis Cunneen
Peggy Dewar
Discovery Bay Golf Club
Duane & Patti Edwards
Angela Elauria
Estate of Francis Bergin
Express Car Wash
Genevieve Fale
Lynn Fleischbein
Donna Forbes
Judith Foritano
Rene Fossum
John & Jan Fudala
Bianca Garguile
Garguile's Red Apple Market
Larry Glapert
James Herron
Abigail Hesselink
Karen Horvath
J J's Fish House
James & Emily Johnson
Robert & Doria Jones
Fred Jones
Margaret Keithly
Kenneth L. Salon and Spa
Kitsap Family YMCA
Linda Larsen
Tim & Susan Lavin
Mike & Vickie Levi
Rhonda Marks-Coats
Marilyn Mathews
Anthony & Maria McCafferty
McCormick Woods
McGraw Hill
Bob McIntosh
David McNabb
Pat Menge
Roger Meyer & Sydney Costigan Cotton
Henry Minch
David & Patti Mitchell
Monica's Waterfront Bakery
Jean Moore
Mor Mor Bistro and Bar
Pauline Moreno
Noah's Ark
William & C.J. North
Thomas Oliver
Olympic Outdoor Center
Olympic Radiology Associates
Joran Palama
Pearson Education
Lorraine Phillip
Suzanne & Christopher Plemmons
Katherine Porter
Steve & Annette B. Quinn
Jolene Ramaker
Sara Rodriguez
Ramon Romero
Jason Sharp
Linda Sheely
Silver City Restaurant & Brewery
Samantha Smith
Robert Smith
Martin & Joan Smith
Sound Dive Center
Barbara & John Stephenson
That's a Some Italian
Dorothy Thayer
Mark Walsh
Karen & Doug Webb
West Sound Home and Garden
Gary Wilkin
Edward & M. Winslow
Cathy Wyatt
Robert Zimmerman

Olympic College Mission

We serve and enrich all our communities by providing quality education and training for all who seek to improve their lives through learning.

Olympic College Vision

At Olympic College we envision learning as a life enhancing journey of discovery where:

— *Our students are life-long learners in a global society.*

To realize our vision, we will focus on student learning and success, promoting learning through accessible education, personalized service, adaptive and innovative teaching, and an ongoing commitment to academic excellence.

— *Our employees are empowered to achieve the college mission.*

To realize our vision, we will appreciate and value our employees, providing opportunities to enhance professional skills, encouraging learning and advancement, and prioritizing and sharing institutional resources.

— *Our community recognizes the college as its cornerstone of learning.*

To realize our vision, we will develop strong community partnerships and fulfill our role as a cultural center, enriching those we serve by creating relevant educational options and bringing a diverse array of activities to the region.



OLYMPIC COLLEGE

*Serving Kitsap and Mason Counties with locations and educational opportunities in
Bremerton, Poulsbo, Shelton, and Naval Base Kitsap.*

1600 Chester Avenue • Bremerton, WA 98337-1699
1.800.259.6718 or 360.792.6050

www.olympic.edu

Olympic College does not discriminate on the basis of race, color, national origin, sex, disability, sexual orientation, or age in its program and activities.
Reasonable accommodations are available for people with disabilities.